

Fact Sheet

Driving in London.



The Low Emission Zone.

The London Low Emission Zone (LEZ) was introduced in February 2008 and will be phased through to different vehicle types until January 2012. The Mayor of London introduced the LEZ to help improve the air quality in London by preventing the most polluting vehicles from being driven in the LEZ.

The LEZ area.

The LEZ covers the majority of the Greater London area and follows the same boundary as the Greater London Authority. All roads within the LEZ are included except for the M25 motorway which is excluded.

Emission standards.

The emissions standards for the LEZ are based on Euro standards. These define the limits for exhaust emissions for new vehicles sold in European Union (EU) member states, and which vehicles must comply with when manufactured.

The table details which vehicles the LEZ applies to and the dates when the relevant particulate matter (PM) emissions standards will apply.

Vehicles which do not meet Transport for London's (TfL) specified emissions standards can still be driven in the LEZ, but will be subject to a

- £200 daily charge for HGVs, buses and coaches and
- £100 daily charge for large vans (see table) and minibuses more than nine seats.


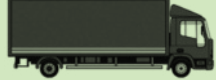



If this daily charge is not paid, the registered keeper will be issued with a penalty charge notice.

The LEZ will affect older, diesel-engined lorries, buses, coaches, large vans and minibuses.

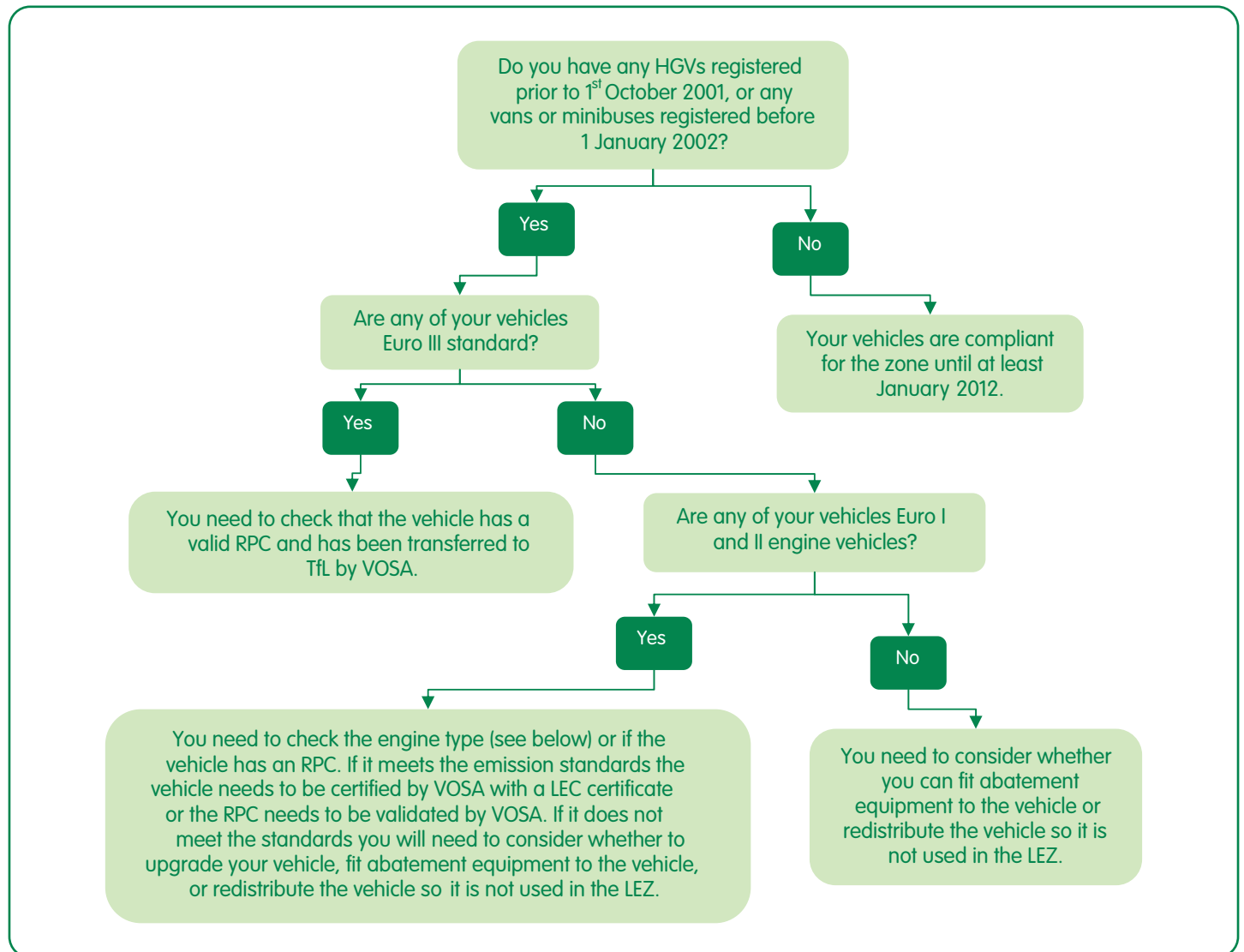
TfL will assume that an HGV is Euro III compliant if it was first registered on or after 1 October 2001, or 1 January 2002 for vans and minibuses.

In other words, these vehicles will be automatically registered as being LEZ compliant. Members which have purchased Euro III vehicles before the mandatory dates will need to register the vehicle for it to be compliant under the LEZ scheme.

Further information on registering vehicles is available on page 3 of this fact sheet.

Vehicle type.		Date affected.	Required emission standards.
Lorries over 12 tonnes gross vehicle weight.		February 2008.	Euro III for PM.
		January 2012.	Euro IV for PM.
Lorries between 3.5 and 12 tonnes gross vehicle weight.		July 2008.	Euro III for PM.
		January 2012.	Euro IV for PM.
Buses and coaches over 5 tonnes gross vehicle weight with more than nine seats.		July 2008.	Euro III for PM.
		January 2012.	Euro IV for PM.
Vans between 1.205 tonnes unladen and 3.5 tonnes gross vehicle weight.		October 2010 deadline has been suspended until further notice.	Euro III for PM.
Minibuses with more than nine seats and below 5 tonnes gross vehicle weight.		October 2010 deadline has been suspended until further notice.	Euro III for PM.

How this affects you.



Euro I/II Vehicles.

Some Euro I and II engine vehicles may meet the PM standards specified for Euro III and therefore could be LEZ compliant.

For a full list of the engines and guidance notes to ensure a Euro I or II vehicle is fully certified and issued with a Low Emission Certificate (LEC) please visit www.tfl.gov.uk/lezlondon.

Vehicles which have a reduced pollution certificate (RPC) and meet the required emission standards can become compliant if they have been inspected and undergone a smoke test carried out by Vehicle and Operator Services Agency (VOSA).

Vehicles tested by VOSA will automatically be registered under the LEZ scheme. You

should note that LECs and RPCs will need to be renewed on an annual basis, which can be carried out when the vehicle under goes its annual test.

Abatement Equipment.

If you wish to drive a vehicle within the LEZ that does not meet the specified emissions standards, you may be able to modify it to reduce its emissions, and thereby ensuring it meets the standards. Options include:

- Fitting approved pollution abatement equipment.
- Fitting a cleaner replacement engine.
- Converting to an approved alternative fuel.

TfL will only accept modifications that have been certified by an approved supplier.

TfL has two lists on their website which provide details of approved devices and suppliers for an RPC or a LEC. These can be found on the website: www.tfl.gov.uk/lezlondon.

These also contain contact details for equipment manufacturers who will be able to advise on abatement devices.

Ensure you keep all documentation for the engine and device as you will need to provide this to VOSA when it is certified.

Once the abatement device has been fitted you will need to book a test with VOSA to get the vehicle certified. After a successful test, VOSA will issue either a LEC or a RPC.

Remember that LECs and RPCs do need to be renewed on an annual basis and this can be carried out when the vehicle undergoes its annual test.

Booking a test.

For pre-funded accounts or payment by credit/debit cards, you can book a LEC or RPC test by calling VOSA on 0300 123 9000 or contact your local test station:

The details that VOSA will ask for at the time of booking are:

- Registration mark of the vehicle if vehicle is registered and number of axles.
- The type of test that the operator wishes VOSA to undertake (LEC or RPC).
- Where the operator would like the inspection carried out.
- When the operator would like the test to be undertaken.
- What is the eligible engine type, or what necessary modifications have been undertaken.

Provided the above information is supplied, an appointment will then be agreed for you to present your vehicle to a test station where a physical inspection and smoke opacity test will take place to determine that the vehicle satisfies the LEZ emissions standard and has the necessary certified abatement device installed.

Important points to note:

1. When presenting a vehicle for inspection it is important that it is accompanied by a person who is competent and equipped to tilt the cab or remove engine access panels safely and is able to reinstate according to manufacturers instructions.
2. Bookings will only be taken for vehicles that either have an engine on the eligible engines list, or have had a certified abatement device fitted onto the vehicle.

Registration.

It is important that if your vehicles do need to be registered with TfL, you do this well in advance of the various introduction dates. Registration forms are available to download from: www.tfl.gov.uk/lezlondon or by calling 0845 607 0009.

What is the Daily Charge?

Operators of vehicles which do not meet the LEZ emissions standards must pay the daily charge if they wish to drive the vehicle in the LEZ. The daily charge will be

- £200 for HGVs, coaches and buses, and
- £100 for large vans and minibuses more than nine seats.

Payments may be made up to 64 working days in advance of travel, on the day of travel or until midnight on the next working day after travelling in the LEZ.

Payments must be made for a specific vehicle on a nominated day.

The daily charging period runs from midnight to midnight. Having paid for a day you can then drive within the LEZ as many times as you like on that particular day.

Discounts and Exemptions.

A small number of vehicles will be granted an exemption from the LEZ and will not need to register with TfL, these include:

- Vehicles designed and built for mainly off-road use, e.g. agricultural vehicles.
- Historic vehicles (those constructed before 1 January 1973).
- Military vehicles not registered with the DVLA or country equivalent.

Vehicles entitled to 100% discount.

Certain showman's vehicles, which have been custom built and are permanently fitted with equipment forming part of the show are entitled to 100% discount from the LEZ and will need to register with TfL.

Penalty Charges.

If a vehicle is driven into the LEZ that does not meet the required emissions standards, does not qualify for a discount or exemption and the daily charge has not been paid by midnight on the next working day after the day of travel, a penalty charge will be issued.

The following penalties will be applied;

- HGVs: £1000 penalty charge per day. This will be reduced to £500 if paid within 14 calendar days, but increased to £1500 if not paid within 28 calendar days.
- Large vans and minibuses: £500 penalty charge per day. This will be reduced to £250 if paid within 14 calendar days, but increased to £750 if not paid within 28 calendar days.

If a vehicle has been found to have three or more outstanding penalty charge notices against it, then further enforcement proceedings may be taken and TfL will have the power to clamp and/or remove these vehicles.

Online information.

Transport for London
www.tfl.gov.uk/lezlondon.

Vehicle and Operator Services Agency
www.dft.gov.uk/vosa

To find out more

Call:

Driver support team
0844 824 0736